

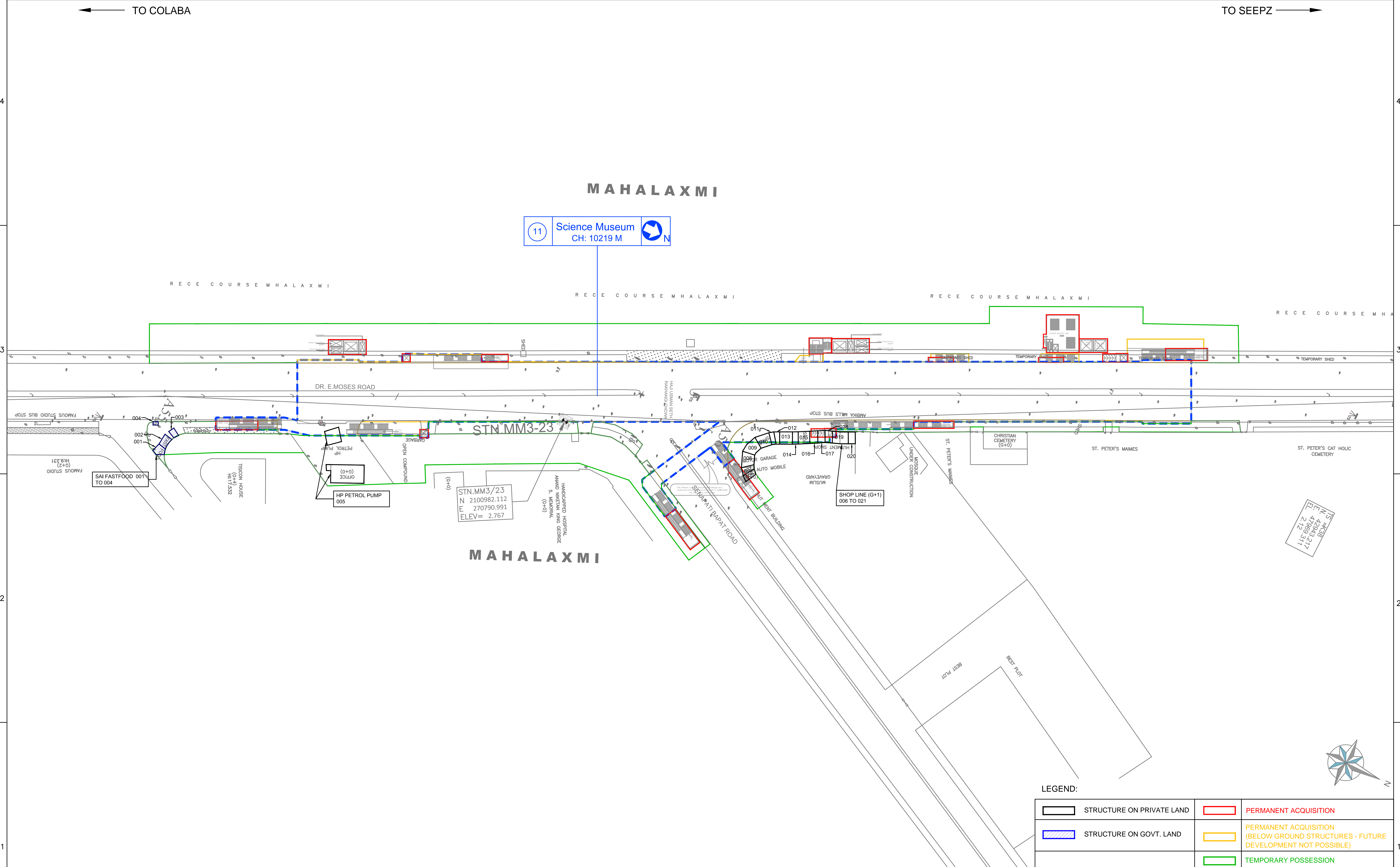
← TO COLABA

TO SEEPZ →

# MAHALAXMI

11 Science Museum  
CH: 10219 M

RECE COURSE MHALAXMI



STN.MM3/23  
N 2100982.112  
E 270790.991  
ELEV= 2.767

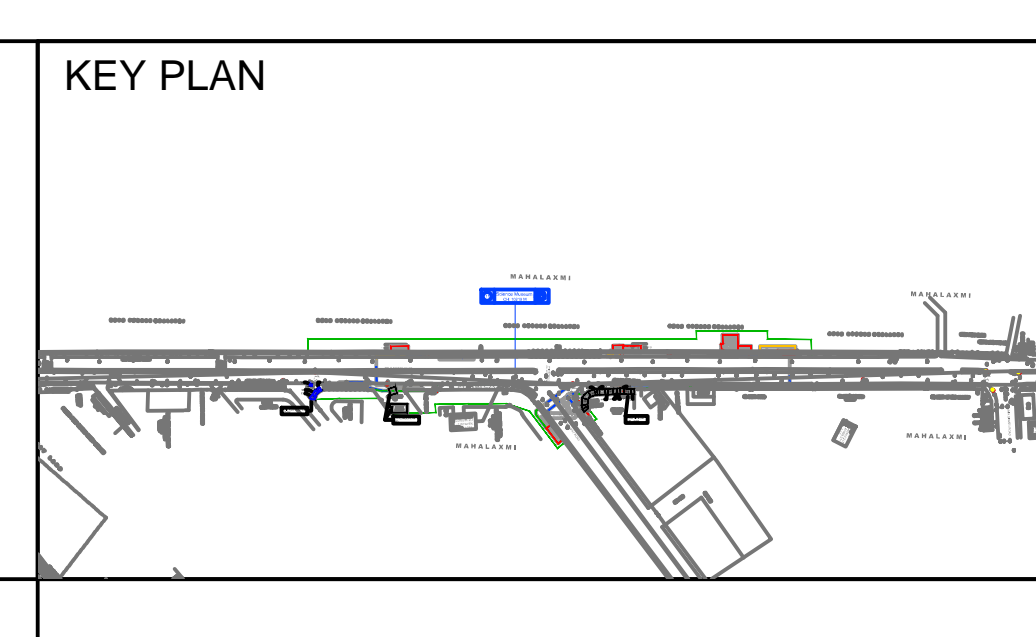
Scale: 1:500  
Date: 21-Jul-15

### LEGEND:

	STRUCTURE ON PRIVATE LAND		PERMANENT ACQUISITION
	STRUCTURE ON GOVT. LAND		PERMANENT ACQUISITION (BELOW GROUND STRUCTURES - FUTURE DEVELOPMENT NOT POSSIBLE)
			TEMPORARY POSSESSION



**INTERIM CONSULTANCY SERVICES  
FOR MUMBAI METRO RAIL PROJECT, LINE No. 3  
COLABA- BANDRA-SEEPZ**



NAME	SIGN
DRAWN BY	
DESIGN BY	
CHECKED BY	
APPROVED BY	

**FOR TENDER ONLY**

SCALE:- 1:500 (A0) DATE:- APRIL 2015

PROJECT:- **MUMBAI METRO LINE 3  
COLABA-BANDRA-SEEPZ**

TITLE:- **AFFECTED AREA FOR  
SCIENCE MUSEUM STATION**

DRAWING NO. :- MML3-CBS/MMRC/IC/R&R/0011

**PADECO**  
PADECO Co., Ltd.  
Shin-Onarimon Bldg.  
6-17-19 Shinbashi,  
Miyato-ku  
Tokyo 105-0004 Japan  
Tel: +81-3-5733-0855  
Fax: +81-3-5733-0856

**AECOM**  
9/F, Infinity Tower C,  
DLF Cyber City, DLF Phase-II,  
Gurgaon - 122 002, Haryana - India  
Tel: +91 124 4830100  
Fax: +91 124 4830373

**THE Louis Berger Group, Inc., USA**  
Engineers • Planners • Scientists • Economists  
1250 23rd St. NW  
Washington, DC 20037,  
USA.  
302, Naman Center,  
Plot No. C-31, G Block,  
Opp Dena Bank, BKC,  
Mumbai 400051  
India

1

1

2

2

3

3

4

4

D

C AKHANDARE 21-Jul-15

B

A